



# Cerberus Monoclonal Antibody

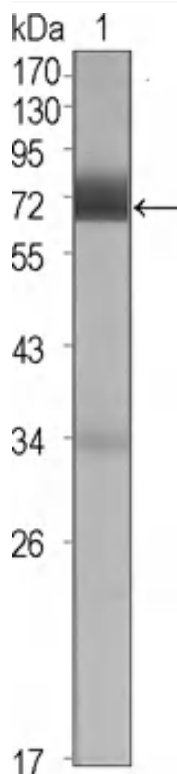
<b>Catalog No</b>	YP-Ab-15826
<b>Isotype</b>	IgG
<b>Reactivity</b>	Human
<b>Applications</b>	WB;IHC;IF;ELISA
<b>Gene Name</b>	CER1
<b>Protein Name</b>	Cerberus
<b>Immunogen</b>	Purified recombinant fragment of human Cerberus expressed in E. Coli.
<b>Specificity</b>	Cerberus Monoclonal Antibody detects endogenous levels of Cerberus protein.
<b>Formulation</b>	Ascitic fluid containing 0.03% sodium azide,0.5% BSA, 50%glycerol.
<b>Source</b>	Monoclonal, Mouse
<b>Purification</b>	Affinity purification
<b>Dilution</b>	WB: 1/500 - 1/2000. IHC: 1/200 - 1/1000. ELISA: 1/10000.. IF 1:50-200
<b>Concentration</b>	1 mg/ml
<b>Purity</b>	≥90%
<b>Storage Stability</b>	-20°C/1 year
<b>Synonyms</b>	CER1; DAND4; Cerberus; Cerberus-related protein; DAN domain family member 4
<b>Observed Band</b>	
<b>Cell Pathway</b>	Secreted .
<b>Tissue Specificity</b>	Blood,PCR rescued clones,
<b>Function</b>	function:Cytokine that may play a role in anterior neural induction and somite formation during embryogenesis in part through a BMP-inhibitory mechanism. Can regulate Nodal signaling during gastrulation as well as the formation and patterning of the primitive streak.,PTM:N-glycosylated.,sequence caution:Translated as Ser.,similarity:Belongs to the DAN family.,similarity:Contains 1 CTCK (C-terminal cystine knot-like) domain.,subunit:Forms monomers and predominantly dimers.,
<b>Background</b>	This gene encodes a cytokine member of the cysteine knot superfamily, characterized by nine conserved cysteines and a cysteine knot region. The cerberus-related cytokines, together with Dan and DRM/Gremlin, represent a group of bone morphogenetic protein (BMP) antagonists that can bind directly to BMPs and inhibit their activity. [provided by RefSeq, Jul 2008],
<b>matters needing attention</b>	Avoid repeated freezing and thawing!



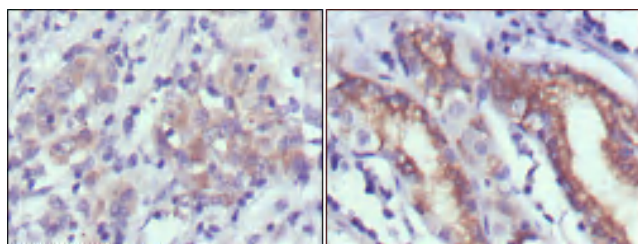
**Usage suggestions**

This product can be used in immunological reaction related experiments. For more information, please consult technical personnel.

**Products Images**



Western Blot analysis using Cerberus Monoclonal Antibody against CER1 (aa18-267)-hlgGfc transfected HEK293 cell lysate (1).



Immunohistochemistry analysis of paraffin-embedded human gastric cancer (left) and normal gastric tissues (right) with DAB staining using Cerberus Monoclonal Antibody.